



UNIMED

Weekly

19th August, 2024
Vol.1 No.9

...advancing frontiers of knowledge in medical and health sciences

MISSION STATEMENT

To provide integrated education and research of exceptional quality in all health-related sciences.

VISION STATEMENT

To be a thriving medical and health Sciences University, locally, nationally and internationally recognised for excellence and innovation.

UNIMED Post-UTME holds on the 3rd, 4th and 5th September, 2024

UNIMED RECEIVES \$500,000 DONATION IN SUPPORT OF THE DEVELOPMENT OF ITS FACULTY OF PHARMACY

The efforts of the University of Medical Sciences (UNIMED), Ondo City, Ondo State to commence undergraduate studies in Pharmacy (Doctor of Pharmacy programme) received a boost with the donation of \$500,000 from General T. Y. Danjuma (ret.) towards the development of infrastructure for UNIMED's Olu Akinkugbe Faculty of Pharmacy. The receipt of the donation was acknowledged at the Board meeting of the the Olu Akinkugbe Pharmacy Education Trust (OAPET) that took place on Thursday, 8th August 2024. OAPET is partnering with the State Government and the University in the development of the Faculty of Pharmacy.



The Chairman of OAPET, Prince Julius Adelusi-Adeluyi, OFR, expressed great delight and gratitude of the Board regarding the donation.

The Vice-Chancellor, Professor Adesegun Fatusi, FNAMed, FAS, who is also a member of the OAPET Board, noted that this "donation will significantly move us forward towards our target of completing and commissioning the Olu Akinkugbe Faculty of Pharmacy building this year" He reiterated the full commitment of the University management to the plan to commence the Doctor of Pharmacy programme in the new academic session, starting in October 2024.

HIGHLIGHTS

- UNIMED Receives \$500,000 Donation in Support of the Development of its Faculty of Pharmacy
- Trainees at LETNeu, UNIMED win multiple national and international research awards and grants.
- UNIMED establishes Department of Complementary Alternative and Herbal Medicine
- The Laboratory for Experimental and Translational Neurobiology (LETNeu), UNIMED Organises an ISN Neuroscience School
- POSTGRADUATE ADMISSION FOR 2024/2025 ACADEMIC SESSION
- POST UTME/DIRECT ENTRY ADMISSION SCREENING FOR THE 2024/2025 ACADEMIC SESSION

From The Editor

This edition features the receipt of \$500,000 donation in support of the development of the University's Faculty of Pharmacy.

It also contains an enthralling interview with Dr Oghale Ovuakporie-Uvo, the Acting Director, Centre for Herbal Medicine and Drug Discovery, who talks about the new Departments of Complementary Alternative and Herbal Medicine, the upcoming 2024 African Traditional Medicine Day and benefits of herbal medicine, among other things.

We also have stories on grants won by trainees of LETNEU and ISN Neuroscience School organised by the Laboratory for Experimental and Translational Neurobiology (LETNeu) and the investiture of Dr Wale Okediran as Fellow, Academy of Letters.

On a lighter note, students of diverse departments made a 'shout out' to friends, fellow students and their lecturers.



ISAAC OLUYI
Head, Public Relations Unit

This edition is fully packed. Enjoy it and stay informed about the goings-on within the university community.

TRAINEES AT LETNEU, UNIMED WIN MULTIPLE NATIONAL AND INTERNATIONAL RESEARCH AWARDS AND GRANTS.

The Laboratory for Experimental and Translational Neurobiology (LETNeu), UNIMED was established in June 2023 by Dr Omamuyowwi Ijomone, an Associate Professor in the Department of Anatomy, Faculty of Basic Medical Sciences, in conjunction with the Central Office for Research and Development (CORD) and the support of the University Management under the astute leadership of the Vice Chancellor, Prof. Fatusi Adesegun. LETNeu is majorly funded by a 5-year grant awarded to Dr Ijomone by the Fogarty International Center of the National Institutes of Health, USA. Overarching research efforts at LETNeu seeks to understand gene-environment interactions in neurological disorders with current focus on metal toxicities as major risk factors for brain diseases. Recently, three trainees at the lab received different grants and awards to support advanced training and/or postgraduate research projects, as follows:

1. Mr. Victor Anadu, an MSc Student in the lab, was awarded a Travel Grant by the Consortium for Genomics and Therapeutics in Africa (CGTA) and the Translational Pharmacokinetics Research Group (TPRG) to attend a workshop on Clinical Pharmacogenetics and Personalized Medicine at Obafemi Awolowo University, Ile Ife in July 2024.



He has also received another Travel Grant from the Neuroscience Society of Nigeria (NSN) to attend and present his recent research at the upcoming NSN conference at Bingham University, Nasarawa State in September 2024. This award includes conference registration fees and travel support.

2. Mr. Toheeb Oyerinde, an MSc Student in the lab, was awarded the DeLill Nasser Travel Award for Professional Development by Genetics Society of America (GSA). The award in the amount of \$1000 will allow him to undergo a four-week laboratory course in RNA extraction and sequencing.



This course will also introduce him to RNAseq data analysis, enabling him to study differentially expressed genes using DeSeq2 and conduct Gene Set Enrichment Analysis to identify the pathways affected by gene-environment interactions.

This course will also introduce him to RNAseq data analysis, enabling him to study differentially expressed genes using DeSeq2 and conduct Gene Set Enrichment Analysis to identify the pathways affected by gene-environment interactions.

3. Ms. Omotosho Omolabake, a Research Associate in LETNeu, was awarded the 2024 Cornerstone Grant by the Histochemical Society (HCS). Ms Omotosho who is set to commence her MSc program in the coming session received this grant of \$3250 to support proposed research for her MSc project titled "Investigating Synaptic Dynamics in Methylmercury Neurotoxicity: Potential Involvement of Sexual Dimorphic Patterns."

to specific synaptic proteins implicated in neurodevelopmental disorders such as autism spectrum disorder, with potential for sexspecific responses. This project will allow her to establish immunofluorescence and double-immunolabelling techniques for fluorescence microscopy in the lab.



Ms. The project aims to explore the impact of methylmercury neurotoxicity on behavioral changes and perturbation

UNIMED ADJUNCT LECTURER GETS HONORARY FELLOWSHIP OF THE NIGERIAN ACADEMY OF LETTERS

Dr Wale Okediran, the celebrated writer of *Tenants of the House*, who is an Adjunct Lecturer at the Institute of Health Humanities and Entrepreneurship of the University of Medical Sciences, Ondo City, has been inducted as an Honorary Fellow of the Nigerian Academy of Letters.

The investiture of Dr Wale Okediran as Honorary Fellow of the Institute took place on Thursday, 8th August, 2024 at the University of Lagos.

Dr Okediran has been an invaluable asset to UNIMED in diverse ways. Apart from being an Adjunct Lecturer with the university, he also delivered the 9th University Distinguished Lecture on the 28th October, 2022.



While we see the recognition of this cerebral writer as a testament to the quality of minds our university attracts from time to time,



the Management and the entire UNIMED community congratulate Dr Okediran on this well deserved honour.

UNIMED ESTABLISHES DEPARTMENT OF COMPLEMENTARY ALTERNATIVE AND HERBAL MEDICINE

... Acting Director, Centre for Herbal Medicine and Drug Discovery says department will serve as a hub for exploring and exploiting the science of indigenous African medicine

Introduction

The Senate of the University of Medical Sciences (UNIMED), Ondo City, recently established the Department of Complementary Alternative and Herbal Medicine, with the approval of NUC, in this interview, Dr Oghale Ovuakporie - Uvo, the Acting Director of Centre for Herbal Medicine and Drug Discovery, spoke about the significance of the Department, benefits of herbal medicine and what to expect from the forthcoming 2024 African Traditional Medicine Day. It's an interesting read.

Your Centre will be hosting the 2024 African Traditional Medicine Day on the 29th August. Can you tell us the objectives of this Day, expected participants and what people will gain by participating in it?

For this year's edition of African Traditional Medicine Day celebration at UNIMED, the centre for Herbal Medicine and Drug Discovery will expect all and sundry that is;

staff members both academic and non academic, students from all facilities especially our medical students, clinicians, health professionals of all degree, traditional medicine practitioners at all levels and of course the general public to glean from the information packed on herbal medicine development and sustainable use in Nigeria.

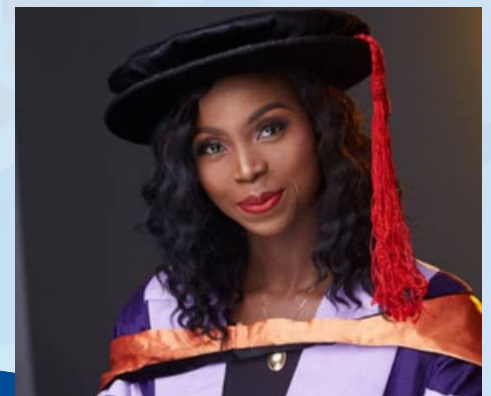
While some use traditional medicine indiscriminately, many tend not to believe in it. How do you intend to educate people on how well to use herbal/traditional medicine, and/or encourage those who do not believe in it to change their views about it?

It's interesting and really funny for anyone not to believe in the power of herbal/ traditional medicine. Aside from the undisputed fact that it's the oldest form of medicine globally, it's a type of medicine everyone practices knowingly or unknowingly. If you eat anything that grows on trees, it means that you believe in the power of herbal medicine because food is medicine. Without mincing words, we all know that a medicine is a substance that has nutritive, curative, or preventive properties, while the term "herbal" refers to a botanical or plant-based preparation. Hence, the term "herbal medicine" is used to describe plant-based substances that consist of nutritive, curative, or preventive properties. Now tell me, why should anyone disbelieve the potency of herbal medicine?

The Senate of the University recently approved the creation of a Department of Complementary, Herbal and Alternative Medicine in the Faculty of Allied Health Sciences and we are aware that NUC had given approval for the commencement of B.Sc. in Complementary and Alternative Medicine,

what should people expect from the Department in terms of value addition to the rich programmes already in existence at UNIMED?

In UNIMED, one of our central thrusts which we sing in our university anthem is "touching lives and making impact in the Nation is our goal". The creation of a Department of Complementary Alternative and Herbal Medicine in our university will serve as a hub for exploring and exploiting the science of indigenous African medicine. Amongst other values, the Department looks to offer a bridge to pull local traditional medicine practitioners and researchers together to objectively evaluate and validate herbal medicines used in folklore practices with a view of packaging them correctly and put proper intellectual rights in place on the products of research for local and international trade. With the creation of the Department of Complementary, Alternative and Herbal Medicine in UNIMED, UNIMED is out to again set the pace as the first specialized medical university in Nigeria to showcase indigenous medicine in a different dimension especially in light of herbal medicine rebranding and global trade. This will again promote efforts to achieve the United Nations Sustainable Development Goal (UN-SDG 3) which is geared towards promoting good health for all.



THE LABORATORY FOR EXPERIMENTAL AND TRANSLATIONAL NEUROBIOLOGY (LETNEU), UNIMED ORGANISES AN ISN NEUROSCIENCE SCHOOL



The Laboratory for Experimental and Translational Neurobiology (LETNeu), UNIMED organizes a summer neuroscience school sponsored by the International Society for Neurochemistry (ISN), with support from the Company of Biologists, UK. Neuroscience schools are short intense workshops focusing on enhancing research on the central nervous system amongst young scientists. This school tagged ISN Neuroscience School, UNIMED, Ondo with the theme Gene-environment interactions in neurological disorders: a contemporary update, was held from August 11th to 16th, 2024 at the Laje Campus of UNIMED.

The opening ceremony of the school held on August 12, 2024, featured a keynote address aptly titled "New Approaches to Unravelling Simultaneous Contributions of Genes and Environment to Brain Diseases", and was delivered by Professor Michael Aschner, a Professor of Molecular Pharmacology, Neuroscience and



Paediatrics at the Albert Einstein College of Medicine, USA, and the Director, Einstein Centre of Toxicology. Professor Aschner highlighted how exposures to certain toxicants in the environment particularly metals can influence our genetic make to trigger onset of brain disorders. Overall, he charged the need for improved policies to mitigate risk of environmental toxicants while also leveraging alternative experimental models to understand the progression of brain disorders. Welcoming participant to the event, the organizer, Dr Omamuyowfi Ijomone, an Associate Professor in the Department of Anatomy, UNIMED and Group Leader of LETNeu, thanked the sponsors while noting that the event provide a significant opportunity for our institution to "enhance its academic and scientific reputation in neuroscience research community both locally and internationally."

The Vice-Chancellor, Professor Adesegun Fatusi applauded Dr Ijomone for the giant stride and encouraged participants to be actively involved in the workshop to gain helpful insights that will be beneficial to them and their respective institutions. "Our university anthem which states that 'creating room to pursue excellence for research and care to all, to achieve the best in health sciences...' signifies why we are glad with this programme that is happening at UNIMED and we are presently discussing efforts to establish a Centre for Neuroscience and Sleep Studies in UNIMED", Fatusi said.

In addition to Prof Aschner, other speakers at the school were Prof Monica Bastos Paoliello from USA, Prof Felix Soares from Brazil, Prof Amos Abolaji from Ibadan, Nigeria and a host of virtual speakers from Germany, and the UK. The programme was well attended by young scientists selected from institutions across Nigeria and the rest of the continent of Africa.



Prof. Michael Aschner delivering his keynote address

ON A LIGHTER NOTE

1. Shoutout to **Sis Oyin**, thank you for all you have done and for being a good friend since the day we met.

Ogundoju Esther Toluwanimi

200 level physiotherapy



2. My name is **Heritage** from the department of Radiography and radiation science. Big Shout out to **Bright, Banke, Funto, Sefunmi, Maryk, Eniola, Yemi and Tessi!** You all are amazing! I love you guys and I wish you the very best in life



4. **Omotola Toluwanimi** prosthetics and orthotics department.

Kudos to **Miss kekere Tosin** for being an amazing lecturer. Thank you so much ma for teaching with so much passion and patience. I love you.

5. My name is **Omosuyi Feranmi Aanuoluwa** from Anatomy department 300level.

Shout-out to my wonderful friend **David Akiroso precious** You made Unimed a home away from home for me



6. My name is **Akinduro Omolara Iyanuoluwa**, a 500L Student of the Department of Prosthetics and Orthotics. A shout out to one in a million Lecturer, **Miss Tosin Kekere**, who has been a great Motivator whenever I feel discouraged on the Path to becoming a Clinical Prosthetist and Orthotist.



7. My name is **Henry Victoria Aloaye** from SLT department 500 level.

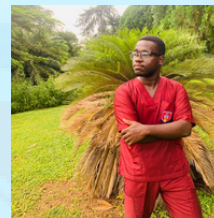
Shout out to my bestie from day 1 in this school **Okunbor Peace**, you're the best thing unimed gave to me



8. My name is **Gift Olubusola** a 400 level student of medicine and Surgery. Shout out to my friend **Ifedolapo Oriade**. Thanks for being my every time partner and for always brightening up the atmosphere with your beautiful smiles.



9. I'm **Aderemi Ayomide**, in Medical laboratory science. I just wanted to take a moment to shout out to my friend **Temitope**, who's been amazing Keep up the fantastic work, Temitope

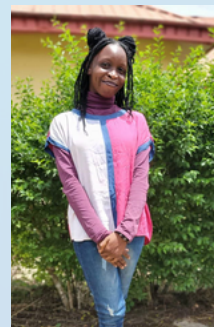


10. My name is **Teniola Binuomote** from Nursing Science 500 level. Shout out to my **lovely community group members**. You made my posting a memorable experience



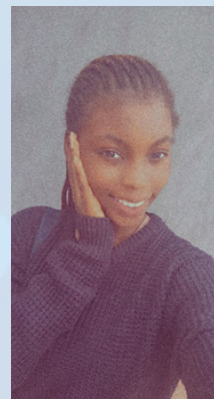
11. My name is **Mosopefoluwa AKA Goldie** I'm in 300l anatomy department Unimed

I want to make a shout out to my baby girl **Preshi** 😊 She's a sweetheart, a good friend, a good supporter, she's very troublesome and playful. I love her and would never want to replace her



12. My name is **Adesanya Nofisat Adedoja** from Medical laboratory Science department 300level.

Big shout-out to **Omosuyi Aanuoluwa Feranmi** for being a constant source of inspiration, motivation, and joy in my life. You're the spark that ignites my passion, creativity, and sense of humor. I'm so thankful for our friendship, which is a beautiful mix of laughter, tears, and inside jokes. Keep shining your light, and I'll keep cheering you on.



13. My name is **Giwa Adejoke Adesewa** from Anatomy department 300level.

Shout-out to my wonderful friend **Nifemi**. You made Unimed a home away from home for me. And to my friend and course mate Precious for the crazy and funny moments during the tough session, you made it easier to spend time in school even when the pressure and stress was high



14. My name is **Ogunmakin Harrison Oluwadarasimi** from Medicine & Surgery department 200 level . Shout-out to my Course rep and a friend , **Akinsiku Timileyin** . You made unimed a memorable place of stay for me .

POSTGRADUATE ADMISSION FOR 2024/2025 ACADEMIC SESSION

Applications are invited from suitably qualified candidates for admission into the University of Medical Sciences Postgraduate courses leading to the award of Postgraduate Certificate, Postgraduate Diploma, M.Sc, M.Phil and Ph.D degrees for the 2024/2025 academic session.

A. GENERAL REQUIREMENTS FOR ALL UNIMED POSTGRADUATE PROGRAMMES:

A candidate for postgraduate studies in UNIMED must have obtained O' Level Credit pass in English Language and Mathematics in addition to three other credits in relevant subjects in WASC, NECO, GCE (ordinary level or their equivalents)

a. Postgraduate Diploma

i. Candidates must be graduates of the University of Medical Sciences or any other Universities recognised by the Senate of the University in relevant areas.

ii. Holders of Higher National Diploma (HND) with a minimum of Lower Credit in relevant areas from recognised institutions.

b. Masters Degree

i. Candidates must possess a Bachelor's Degree in relevant areas from the University of Medical Sciences or other recognised universities with a minimum of Second Class Honours.

ii. Candidates with Third Class Honours Degree or HND (in relevant areas) with appropriate Postgraduate Diploma from any other recognised institutions with minimum CGPA of 3.50 on a 5 point scale (or at least Upper Credit in the Postgraduate Diploma). In addition, the holders of HND, PGD/PGDE certificates should satisfy the basic School Certificate or GCE Ordinary Level entry requirements credit in five relevant subjects for admission into Bachelor's Degree programmes of the respective Departments.

c. Doctor of Philosophy Degree

Holders of Master's Degree from any University recognised by the Senate of the University with a minimum weighted average of 60%.

Interested candidates shall complete the application form on the University portal and provide all relevant documents as specified on the application form, including certificates of degrees and/or diplomas, academic transcripts, three (3) reference letters, and a 500-words statement of intent in the proposed research area. Candidates who are Nigerian citizens shall, in addition, provide the National Youth Service Corps (NYSC) discharge, exemption or exclusion certificate. Each candidate shall request and ensure that the institution(s) attended process and forward official academic transcript(s) directly to the Secretary, Postgraduate School. Only candidates whose transcripts are received will be considered for admission. Please make sure you include your e-mail address/telephone when applying.

B. The following are the available courses:

(I) CENTRE FOR HEALTH PROFESSIONS AND BIOMEDICAL EDUCATION

Programmes offered:

1. Postgraduate Certificate (PG Cert.) in Health Professions and Biomedical Education (Part-Time, Virtual, minimum of 1 semester and maximum of 3 semesters)

2. Postgraduate Diploma (PGD) in Health Professions and Biomedical Education (Part-Time, Virtual, minimum of 3 semesters and maximum of 6 semesters)

Options in: (i) Biomedical Education; (ii) Health Professions Education/Medical Education

3. M.Sc. in Health Professions and Biomedical Education (Part-Time, Virtual, minimum of 6 semesters and maximum of 9 semesters)

Options in: (i) Biomedical Education; (ii) Health Professions Education/Medical Education

Admission Requirements:

A. PG Cert. in Health Professions and Biomedical Education (Virtual)

Candidates must possess a National Diploma, Higher National Diploma or first degree in any Health, Allied and Health related disciplines from a university recognised by the Senate of the University.

B. PGD in Health Professions and Biomedical Education (Virtual)

i.) Candidates must possess a National Diploma, Higher National Diploma or first degree in any Health, Allied and Health related disciplines from a University recognised by the Senate of the University.

ii.) Admission is also open to candidates with any of the above qualifications with a PG. Cert. in Health Professions and Biomedical Education of UNIMED or its equivalent recognised by the Senate of the university. Such applicants will be exempted from first semester courses.

C. M.Sc. in Health Professions and Biomedical Education (Part-Time, Virtual)

i.) Candidates must possess a first degree (minimum of second class lower) in any Health, Allied and Health related disciplines from a University recognised by the Senate of the University.

ii.) Candidates with any of the above qualifications who have PG. Dip. in Health Professions and Biomedical Education of UNIMED or its equivalent recognised by the University. Such applicants will be exempted from course work of the first and second semesters.

Duration: PG Cert. (Minimum 3 Semesters, Maximum 6 Semesters) PGD (Minimum 3 Semesters, Maximum 9 Semesters) M.Sc (Minimum 6 Semesters, Maximum 9 Semesters).

(2) CENTRE FOR HERBAL MEDICINE AND DRUG DISCOVERY

Programme offered:

1.PGD in Herbal Medicine

Admission Requirements

- i. Candidates must have completed HND, B. Sc and post NYSC with minimum of third Class degree in any related discipline including Botany, Biochemistry, Physiology, Microbiology, Chemistry, other life science courses and social sciences courses from any institution recognised by the University Senate.
- ii. Holders of HND in relevant programmes from approved institutions with a minimum of Credit will be eligible for admission.
- iii. Candidates may be required to undergo a screening exercise by the University to assess their suitability for the programme.

Duration: 10 months: 2 Semesters (Full-Time) in addition to 4 months of Compulsory internship,

(3.) INSTITUTE OF ADVANCED CLINICAL SCIENCES EDUCATION

Programmes offered:

1. M.Sc in Health Law and Policy

2. M.Phil. & M.Phil./PhD) in Health Law and Policy

3. PhD in Health Law and Policy

4. PhD Clinical Sciences

- a. Doctor of Philosophy (PhD) in Medical Sciences
- b. Doctor of Philosophy (PhD) in Dental Sciences
- c. Doctor of Philosophy (PhD) in Pathology Sciences
- d. Doctor of Philosophy (PhD) in Surgical Sciences
- e. Doctor of Philosophy (PhD) in Community Medicine and Public Health

Admission Requirements:

A. M.Sc in Health Law and Policy

a. First degree in Medicine, Dentistry, Law or any other discipline in the Health Sciences and Social Sciences (MBBS, BDS, LLB, B.Sc with a minimum of Second Class Lower or

b. Registrable professional qualification and a minimum of two years of post-qualification field experience; or

c. Any other qualification deemed equivalent and acceptable by the Board of the Postgraduate School and approved by the University Senate.

B. M.Phil. & M.Phil./PhD) in Health Law and Policy

Candidates must hold a Master's degree in Health Law and Policy with a weighted average of 50-59.9%.

C. PhD in Health Law and Policy

Candidates must hold a Master's degree with a research dissertation in Health Law and Policy with a minimum weighted average of 60% and above.

D. PhD in Clinical Sciences

Candidates must hold:

- a. Full Fellowship of either the National Postgraduate Medical College of Nigeria, the West African College of Physicians (WACP) or the West African College of Surgeons (WACS), or any foreign Fellowship recognised by the Medical and Dental Council of Nigeria;

b. Part 1 Membership examination of the National Postgraduate Medical College of Nigeria, the West African College of Physicians, or the West African College of Surgeons, or equivalent Colleges in Africa and beyond;

c. Holders of Bachelor of Medicine Bachelor of Surgery degree (MB.BS, MB.ChB), Bachelor of Dental Surgery (B.D.S., B.ChD) or equivalent AND Master's degree in relevant aspects of Medicine and Surgery from a recognised university with a GPA of 4.0 on a 5-point scale or 3.0 on a 4.0-point scales;

In addition to the professional qualifications above, applicants must be fully registered by the Medical and Dental Council of Nigeria and hold a valid annual license to practice.

NB: Candidates may be required to undergo a screening exercise by the University to assess their suitability for the PhD programme.

Duration of programmes:

a. M.Sc.one (1) calendar year

b. Ph.D the programme will be 2 years for applicants with (a) above, and 3 years for those with (b) and (c).

(4) INSTITUTE OF SPORT SCIENCE AND MEDICINE

Programmes offered:

1.PGD in Exercise and Sports Science

2.PGD in Sports Medicine

3.M.Sc in Exercise and Sports Science

4.M.Sc in Sports Medicine

5. MPhil in Exercise and Sports Science

6. MPhil in Sports Medicine

7. PhD in Exercise and Sports Science

8. PhD in Sports Medicine

Admission requirements

A. PGD in Sports and Exercise Science

Candidates with first Science in Medicine or Dentistry, Physiotherapy (BMR,PT B.Sc PT, BPT) Occupational Therapy (BMR,OT BOT) Medical Laboratory Science(B.Sc, MLS, BMLS) Nursing Science (B.Sc Nursing) and Pharmacy(B.Sc Pharm).

B. PGD in Sports Medicine

Candidates with first Science in Medicine or Dentistry

C. M. Sc in Exercise and Sports Science

i. Candidates with first degree in Physiotherapy (BMR PT BSc PT, BPT), Occupational Therapy (BMR OT, BSc OT, BOT), Prosthetics and Orthotics (BSc P&O and BOP), Audiology, Speech Language Therapy, Physiology (BSc Physiology), Physical and Health Education/Human Kinetics or any other relevant field from a recognised University.

ii. Candidates with CGPA of at least 3.5 out of 5 are eligible.

iii. Also, a candidate with Postgraduate Diploma in Exercise and Sport Science or Exercise Physiology with a minimum of 60% Cumulative Grade (MSc Grade) is eligible to apply. The candidates must also have 5 credits pass including English and Mathematics.

D. M. Sc in Sports Medicine

- i. Candidates with first degree in Medicine or Dentistry
- ii. Also, candidate with Postgraduate Diploma in Sport Medicine with a minimum of 60% Cumulative Grade (MSc Grade) are eligible to apply.

E. M.Phil/PhD Exercise and Sports Science

- i. M.Phil: Candidates must have an overall average of between 55- 59% in an M.Sc degree in Exercise and Sports Science
- ii. Ph.D: Candidates must have a weighted average of 60% in M.Sc programme or must have completed M.Phil in in Exercise and Sports

Duration: PGD (Full-Time: 2 Semesters) M.Sc (Full-Time: 3 Semesters) Ph.D (Full-Time: 6 Semesters)

D. MPhil/PhD in Sports Medicine

- i. M.Phil: Candidates must have an overall average of between 55- 59% in an M.Sc degree in Sports Medicine
- ii. Ph.D: Candidates must have a weighted average of 60% in M.Sc degree programme or must have completed M.Phil in Sports Medicine

(5.) SCHOOL OF PUBLIC HEALTH Programmes offered

i. Postgraduate Diploma (PGD)

- a. PGD Public Health
- b. PGD Health Statistics
- c. PGD Environmental Health

ii. Master's Degree in Public Health (MPH), with specialisation in one of the following options:

- a. Epidemiology & Biostatistics
- b. Health Policy and Management
- c. Environmental Health
- d. Population, Family & Reproductive Health
- e. Health Promotion & Behavioural Sciences

iii. Master of Science Degree in Public Health (MSc)

iv. Master of Science Degree (M.Sc) in Health Promotion and Behavioral Sciences

v. Master of Science Degree (MSc) in Community Health with specialisation in one of the following options:

- a. Community Maternal and Child Health Care
- b. Primary Health Care Operations
- c. Community Health Practice
- d. Community Health Education

vi. Master of Science Degree in Environmental Health Science with specialisation in one of the following options:

- a. Pollution Control Management
- b. Environmental Epidemiology
- c. Solid and Special Waste Management
- d. Food Hygiene, Safety and Quality Assurance
- e. Vector Control and Pest Management
- f. Health Education and Promotion

vii. M.Phil/PhD programmes (MPhil: One calendar year)

- a. MPhil/PhD Public Health
- b. MPhil/PhD Environmental Health Science
- c. MPhil/PhD Community Health

viii. PhD programmes with specialisations (Three calendar years)

(i) Ph.D Public Health, (By Coursework or Thesis) with specialisation in one of the following:

- a) Epidemiology & Biostatistics
- b) Health Policy and Management
- c) Environmental Health
- d) Population, Family & Reproductive Health
- e) Health Promotion & Behavioural Sciences

(ii) Ph.D in Community Health, with specialisation in one of the following:

- a) Community Maternal and Child Health Care
- b) Primary Health Care Operations
- c) Community Health Practice
- d) Community Health Education

(iii) Ph.D in Environmental Health Science, with specialisation in one of the following:

- a) Pollution Control Management (PCM)
- b) Environmental Epidemiology (EEP)
- c) Solid and Special Waste Management (SWM)
- d) Food Hygiene, Safety and Quality Assurance (FSQ)
- e) Vector Control and Pest Management (VPM)
- f) Health Education and Promotion (HEP)

ix. Doctor of Public Health (DrPH)

Admission Requirement:

A. PGD

i. Candidates must have Bachelor's degree in any discipline, with a minimum of Third (3rd) Class or Higher National Diploma (with a minimum of Lower Credit) or its equivalent. A credit pass in Biology/Agric Science/Animal Husbandry/Health Science should be among the subject combinations at O'level, for non-health related background candidates.

B. M.Sc

Candidates must be a graduate of allied health sciences with a minimum of Second Class Lower or holders of relevant PGDs or its equivalent. Students to be admitted into the various Masters programmes will be required to take part and be successful in the written and oral qualifying test.

C. MPhil/PhD

Candidates must have relevant academic MPH/M.Sc Public Health. M.Sc Community Health and M.Sc Environmental Health Science, and related degrees with 50.0-59.9% aggregate score; or holders of the Part I of the Fellowship of the National Postgraduate Medical College or West African College of Physicians in Public / Community Health. All MPhil/PhD candidates will be assessed on their merit.

D. Ph.D

Candidates must hold MPH/M.Sc or related Degree with PhD grade. Assessed on their own merit, Part II Fellows of the National Postgraduate Medical College or West African College of Physicians in Public/Community Health may be admitted into the 2-year programme of the Doctoral programmes by Thesis.

Non-Community Health Fellows and Post Part I Public/Community Health residents (with academic MPH/M.Sc.PH) may also be admitted into the 2-year Ph.D by Thesis programmes after an assessment based on their own merit. Such residents must have spent a minimum of 6 months in the residence training programme. Fellows or Post Part I Public/Community Health residents (with academic MPH/M.Sc.PH) applying for the 3-year PhD programme by coursework, may be exempted from some selected courses after assessment.

The Ph.D Community Health programme is for candidates with M.Sc Community Health of the University of Medical Sciences or others recognised by the Senate of the University, with a Ph.D grade. Candidates who could not make the Ph.D grade in the MSc programme may be asked to start with the MPhil/PhD programme. The DrPH degree is to top professionally and clinically qualified (Medical and Nursing) graduates with an MPH or MPhil Degree with PhD grade, and assessed on their own merit. PhD candidates who finished secondary school education on or before 1993 may have their O level results assessed on its own merit.

Duration :

PGD : (Full-Time 1 calendar year) **M.Sc:** (Full-Time 1 Calendar year) **Ph.D :** (Full-Time 3 Years)

(6) FACULTY OF BASIC MEDICAL SCIENCES

I. DEPARTMENT OF ANATOMY

Programmes offered:

- 1.M.Sc. Anatomy
- 2.M.Phil./PhD Anatomy
- .Ph.D Anatomy
- Available Options/Specialization:
- Neuroscience and Endocrinology
- Medical Genetics and Molecular Biology,
- Biological Anthropology and Forensic Science

Admission Requirements:

A. M.Sc Anatomy

i. A first degree not lower than Second Class Lower in Anatomy, Dentistry, Medicine and Surgery. In some cases, any other relevant field of Medical Sciences could be considered based on a satisfactory transcript presented to the Department during application.

ii. Candidates who are not UNIMED graduate may be required to satisfy the Department requirement for admission via an interview/examination or both.

B. M.Phil. Anatomy

i. An applicant for admission to Master of Philosophy must be a holder of Master of Science degree in Anatomy with a weighted average of 50-54%.

ii. Candidates who are not UNIMED graduates may be required to satisfy the Department requirement for admission via an interview/examination or both.

C. M.Phil./PhD Anatomy

An applicant for admission to M.Phil./PhD must be a holder of Master of Science degree in Anatomy with a weighted average of 55-59%.

D. Ph.D Biochemistry

Candidates must have M.Sc. Biochemistry with Ph.D grade or M.Phil in Biochemistry degree. Holders with a minimum weighted average of 60%.

Duration: PGD (1 calendar year –Full-Time) M.Sc (18calendar months- Full-Time) Ph.D (36 calendar months)

III. DEPARTMENT OF PHYSIOLOGY

Programmes offered:

- 1. M.Sc. Physiology
- 2 M.Phil. Physiology
- 3. M.Phil./Ph.D. Physiology
- 4. Ph.D. Physiology
- Areas of Specialization/Option:
- i. Endocrinology and Metabolism
- ii. Reproduction and Fetal Monitoring
- iii. Cardiovascular and Respiratory Physiology
- iv. Gastrointestinal and Respiratory
- v. Renal Physiology
- vi. Neurophysiology
- vii. Nutrition Physiology
- viii. Applied and Environmental Physiology
- ix. Oral Physiology
- x. Cellular and molecular Physiology

Admission Requirements:

a. M.Sc Physiology

i. Candidates with first degree in Physiology, Nursing, Medical Rehabilitation, Physiotherapy, Medical Laboratory, Human Nutrition and Dietetics and Pharmacy with at least a second class (lower division) from UNIMED or from any other University recognised by the Senate of UNIMED.

ii. Candidates with Professional qualifications in Medicine (MBBS), Dentistry (BDS) or Veterinary Medicine (DVM) are also eligible.

iii. Candidates who are not UNIMED graduates may be required to satisfy the Department requirement for admission via an interview/ examination or both.

B. M.Phil Physiology

i. Candidates who possess a Master degree in Physiology of the University of Medical Sciences, Ondo or equivalent qualification from other Universities recognised by Senate with 50-54% weighted average score.

ii. Candidates who are not UNIMED graduate may be required to satisfy the Department's requirement for admission via an interview/examination or both.

C. M.Phil

i. Candidates must have M.Sc degree in Physiology with a research thesis in any of the areas of specialisation stated above with a minimum weighted average of 55- 59%.

ii. Candidates who are not UNIMED graduates may be required to satisfy the Department's requirement for admission via an interview/examination or both.

D. Ph.D

i. Candidates with M.Sc. Degree in Physiology with a 60% weighted average from University of Medical Sciences, Ondo, or any other Universities recognised by the Senate.

or
ii. Candidates with M.Phil. Degree with a research thesis in any of the areas of specialisation stated above of the University of Medical Sciences, Ondo.

Duration: M.Sc. (Full-Time: 18 calendar months) Ph.D (Full-Time: Minimum 6 academic semesters, Maximum 36 academic semesters.

(7) FACULTY OF SCIENCES

I. DEPARTMENT OF BIOSCIENCES AND BIOTECHNOLOGY

Programmes Offered:

- 1.PGD. Genetic Counseling and Forensic Biology
- 2.M.Sc. Animal and Environmental Biology with specialisation in:
 - i.Molecular Parasitology (Option)
 - ii.Genetics and Biotechnology(Option)
 - iii.Environmental Biology and Toxicology(Option)

A. PGD.Genetic Counseling and Forensic Biology

B. M.Sc in Plant Biology and Biotechnology

Areas of specialization/options

- i. Phytomedicine
- ii. Genetics
- iii. Plant Physiology
- iv. Plant Ecology
- v. Plant Anatomy
- vi. Biosystematics/Taxonomy
- vii. Plant Pathology

C. Ph.D in Animal and Environmental Biology

Areas of specialization/options

- i. Molecular Parasitology
- ii. Genetics and Biotechnology
- iii. Environmental Biology and Toxicology

D. PhD in Plant Biology and Biotechnology

Areas of specialization/options

- i. Phytomedicine
- ii. Genetics
- iii. Plant Physiology
- iv. Plant Ecology
- v. Plant Anatomy
- vi. Biosystematics/ Taxonomy
- vii. Plant Pathology

Admission Requirements

A. PGD in Genetic Counseling and Forensic Biology

Candidates must have any of the following qualifications:

- i. Bachelor's degree or its equivalent not lower than a third class or HND in any area of Biological, Medical, Bio-medical or Paramedical Sciences and are currently engaged in activities requiring knowledge of Genetic Counseling or Forensic Biology. These include members of the Police Force, clergymen, medical and legal practitioners, security personnel, and other related personnel.
- ii. Bachelor's degree not less than a third class in any area of Education including Education (Biology), Arts, Social Sciences who require Forensic Biology or Genetic Counseling in their endeavours.

B. M.Sc in Animal and Environmental Biology

Candidates must have a minimum of not less than Second Class Lower in Bachelor in Biological Sciences or related disciplines. Candidates with Postgraduate Diploma Degree, HND and Third Class degrees in related fields may also be considered for admission.

C. Ph.D

Eligibility includes Master of Science (M.Sc./M.Tech. or equivalent degree) in any field of Animal and Environmental Biology scoring at least 60% or with a G.P.A of 3.50 on a scale of 5.0. The Ph. D Degree programme is open to candidates holding an M.Sc. or M.Phil. Preferably in Animal and Environmental Biology. Duration of Programme: PGD (Full-Time: 2 Semesters) M.Sc.(Full-Time: 6 Semesters, Part-Time 8 Semesters) Ph.D (Full-Time .6 Semesters, Part-Time: 36 Semesters)

II. DEPARTMENT OF MICROBIOLOGY

Programmes Offered:

- 1.Postgraduate Diploma Programme in Microbiology
 - 2.M. Sc Microbiology
 - 3.M.Phil./Ph.D. and Ph.D.
- Available options:
- i. Environmental Microbiology
 - ii. Food and Industrial Microbiology
 - iii. Medical Microbiology

Admission Requirements:

A. PGD. Microbiology

The criteria for admission into the PGD programme in Microbiology will be as follows:

- i.All candidates must have five credit passes including English, Mathematics, Biology, Chemistry and Physics at 'O' Level.
- ii. Candidates with Bachelor's degree from an approved University must obtain a minimum of third class degree in the relevant science discipline.

B. M. Sc Microbiology

- i. Admission to the programme of M. Sc is open to graduates of the University of Medical Sciences Ondo or graduates of other Universities recognised by Senate who have graduated with Bachelor's degree in Microbiology or related disciplines with a minimum of Second Class Lower Division
- ii. Holders of HND and Third Class with PGD in relevant subjects may also be considered for admission..

Duration :

PGD (Full-time shall run for a minimum of two semesters and a maximum of four semesters) M.Sc (Full-Time shall run for a minimum of three semesters and a maximum of four semesters.M.Phil/Ph.D(Full time shall run for a minimum of three semesters and a maximum of four semesters).Ph.D (Full-Time minimum of 36 months while part time student for a Ph.D. in a maximum of 48 months)

III. DEPARTMENT OF CHEMISTRY

Programmes offered:

1. PGD in:
 - .i. Industrial Chemistry
 - ii. Analytical and Environmental Chemistry
 - iii. Petrochemistry
- 2.M.Sc Chemistry
- 3.M.Sc Industrial and Environmental Management
 - i. Environmental Pollution Control and Management
 - ii. Food and Pharmaceutical Science
 - iii. Industrial and Environmental Health and Safety

4. MPhil..and Ph.D

OPTIONS:

- a. Analytical and Environmental Chemistry
 - i. Environmental Chemistry
(Food water soil and air analysis Management)
 - ii. Environmental management toxicology
 - iii. Food Chemistry
- b. Analytical and forensic Chemistry
 - i. Forensic and Cyber security
- c. Industrial Chemistry
 - i. Pharmaceutical Chemistry
 - ii. Waste conversion and management
- d. Inorganic Chemistry
 - i. Catalysis
 - ii. Bio- inorganic Chemistry
 - iii. Inorganic material science
- e. Medicinal and Organic Chemistry
 - i. Pharmacognosy
 - ii. Natural products/phytochemistry
- f. Physical Chemistry
 - i. Corrosion and material Science
 - ii. Nanotechnology and dynamics of cooling system
 - iii. Chem-informatics (Computational Chemistry)

Admission Requirements

A. PGD Chemistry

1. A candidate with minimum qualification of Bachelor's degree with Third Class in Natural Science, Engineering and other related fields.
2. HND holder in the same field or equivalent professional certificate or equivalent qualification

B. M. Sc Chemistry

1. Candidates must have Minimum of 2nd Class Lower in Chemistry
2. A lower class of degree with relevant professional qualification

B. M.Phil / Ph.D

Candidate with an overall average of between 55 -59% in an M.sc degree in Chemistry.

D. Ph.D

1. Weighed average of 60% in M. Sc. Chemistry Courses
2. Candidates with an overall average of between 55 – 59% in an M.Sc. degree in Chemistry.

Duration: PGD (Full-Time: 2 Semesters) M.Sc (Full-Time: 3 Semesters) Ph .D (Full-Time: 6 Semesters)

IV. DEPARTMENT OF PHYSICS

Programme offered:

1. PGD Physics
2. M.Sc Physics
3. M.Phil/Ph.D Physics
4. Ph.D Physic

Areas of specialisation:

- i. Medical Physics
- ii. Environmental Physics
- iii. Energies Studies and Economics
- iv. Geophysics
- v. Electronics and Communication Physics

Admission Requirements

A. PGD Physics

Candidates must have a minimum of Bachelor qualification of Third Class degree in Natural Sciences, Engineering and other related field.

B .M.Sc Physics

- i. Candidates must have a minimum of Second Class degree or
- ii. A lower class of degree, but with relevant professional qualification.

M.Phil/Ph.D Physics

Candidates must have an overall average of between 55-59% in an M.Sc degree in Physics

D . Ph.D Physics

Candidates must have a weighted average of 60% in M.Sc Physics programme.

Duration: PGD (Full-Time: 2 Semesters) M.Sc (Full-Time: 3 Semesters) Ph.D (Full-Time: 6 Semesters)

V. DEPARTMENT OF MATHEMATICS

Programme offered:

1. M.Sc Mathematics
Areas of specialisation:
 - i. Numerical Analysis
 - ii. Fluid Dynamics
 - iii. Analytical Dynamics
 - iv. Mathematical Biology

Admission Requirements:

A M.Sc. Mathematics
Prospective candidates must hold B.Sc or B.Ed degree (not lower than Second Class Lower Division in Mathematics from UNIMED or any University recognised by the Senate of the University.

Duration: (Full-Time: 3 Semesters)

(8.) FACULTY OF NURSING SCIENCE

Programmes Offered:

1. PGD in Nurising Education
 2. M.Sc Nursing
 3. M.Phil/ Ph.D Nursing
 4. Ph.D Nursing
- MSc/MPhil/PhD Areas of Specialization/options:
- i) Adult Health Nursing
 - ii) Community Health Nursing
 - iii) Maternal Neonatal and Child Health Nursing
 - iv) Nursing Education

Admission Requirements

A. PGD (Nursing Education)
i. Candidate must have at least a first degree in Nursing or Nursing Science obtained from UNIMED and any other recognised Universities.

B. M.Sc Nursing

Candidates must have Bachelor in Nursing (BNSc) with at least Second-Class lower honours or its equivalent e.g. PGDN or PGDNE. Candidate must be registered with the Nursing and Midwifery Council of Nigeria (N&MCN) as a registered Nurse and have a current license to practice in Nigeria. Other selection considerations include Grade Point Average of not less than 2.4 on a 5-point scale or its equivalent.

C. M.Phil/Ph.D Nursing

A candidate with Master's degree with CGPA of 3.5 on a 5-point scale from a related Nursing Department/discipline who wishes to do a Ph.D work in Nursing, he/she must be admitted for MPhil/Ph.D degree programme. Candidates must also have five credit passes in English, Mathematics, Biology, Chemistry and Physics at O'Level.

Candidates must have Bachelor's Degree in Nursing from an approved University with CGPA of 3.5 on a 5-point scale.

Candidates with Professional Master's in Nursing with a GPA of 2.4 on a 5-point scale or weighted average of 55-59.99% are also eligible for admission into MPhil/Ph.D programme.

D. Ph.D Nursing

Candidate must have obtained the degree of Master's in Nursing, with a minimum of 4.00 Grade Point Average on 5 point (or at least 60% weighted average) are eligible provided that satisfactory research work formed part of the degree programme. The dissertation score should not be lower than 60% (B)

Candidates with Bachelor's degree in Nursing from a recognised University must obtain a minimum of Second-Class Lower Division with a CGPA of not less than 2.4 on a 5 point scale or its equivalent.

Duration of Programme:

PGDNE (Full-Time :Minimum of 2 semesters and maximum of 4 semesters. Part-Time : Minimum of 4 semesters and maximum of 6 semesters).

M.Sc (Full-Time: Minimum of 2 semesters maximum 4, Part-Time Minimum of 4 Semesters maximum 6 Semesters) M.Phil/Ph.D (Full-Time - Minimum of 2 semesters and maximum of 4 semesters. Part-Time : Minimum of 4 semesters and maximum of 6 semesters)

Ph.D (Full-Time: Minimum of 6 semesters and maximum of 12 semesters. Part-Time : Minimum of 12 semesters and maximum of 36 semesters)

(9) FACULTY OF ALLIED HEALTH SCIENCES

Programmes Offered:

- 1.M.Sc. in Medical Laboratory Science
- 2.M.Phil. / PhD in Medical Laboratory Science
- 3.PhD.in Medical Laboratory Science

Areas of Specialization:

M.Sc. / M.Phil.-PhD/ PhD in Medical Laboratory Science with the following

Specialties / Options:

- (a) Public Health Microbiology and Parasitology
- (b) Chemical Pathology
- (c) Blood Transfusion Science and Hematology
- (d) Histopathology and Cytopathology

Admission Requirements:

A. M.Sc. in Medical Laboratory Science

Candidates seeking admission into the M.Sc. in Medical Laboratory Science must in addition to the general

University requirements possess any of the following qualifications:

i. B.MLS, B. Pharm, MBBS and Bachelor of Science Degree in relevant fields recognised by the UNIMED Senate with minimum of Second Class and approved by the Postgraduate Board of the University. Holders of Fellowship of Medical Laboratory Science Council of Nigeria in related fields Post – graduate diploma in relevant fields with a minimum grade of Upper credit of 60% Grade from universities recognised by the Senate of UNIMED

B. M.Phil./PhD.In Medical Laboratory Science

To be eligible for admission into M.Phil. / PhD in Medical Laboratory Science of the department of Medical Laboratory Science, in addition to satisfying the Postgraduate School requirements for admission, the candidates must possess M.Sc. degree in Medical Laboratory Science of UNIMED or any other recognised institutions approved by the Senate of the University with weighted average between 55-59.99%

C. Ph.D.in Medical Laboratory Science

To be eligible for admission into Ph.D.in Medical Laboratory Science, in addition to satisfying the Postgraduate School requirements for admission, the candidates must possess M.Sc. or M.Phil. Degree with minimum weighted average of 60% in Medical Laboratory Science of UNIMED or any other recognised institutions approved by the Senate of the University

DURATION

Full-time M.Sc. Program: Minimum of three (3) semesters in 18 months. Maximum period is six (6) semesters

Full-time Ph.D. Program: Minimum of Six (6) semesters in three academic years.

Maximum period is five (5) academic years

Full-time M.Phil.-Ph.D.Program: Minimum of eight (8) semesters in four academic years.

Maximum period is 6 academic years.

(10) FACULTY OF MEDICAL REHABILITATION DEPARTMENT OF PHYSIOTHERAPY

Programmes offered:

1. M.Sc in Physiotherapy
- 2..Doctor of Philosophy (PhD) in Physiotherapy

Admission Requirements

M .Sc in Physiotherapy (Physiotherapy)

i. Candidates for admission into the M.Sc. (Physiotherapy) should have at least a Bachelor's degree (Second Class Lower Division) or its equivalent in Physical Therapy or Doctor of Physical Therapy (DPT) from a recognised University.

ii. The candidate should have had at least two years post-qualification clinical experience after the Bachelor Degree before embarking on the M.Sc. programme.

iii. The Candidate should be fully registered with Nigeria Medical Rehabilitation Therapists Board and must possess a current license of the Board.

Doctor of Philosophy in Physiotherapy (Ph.D. (Physiotherapy))

(i) Candidates must possess a first degree in Physiotherapy (BMR PT, BPT or B.Sc PT)

(ii) Candidates for admission to the Ph.D (P.T) programme must have successfully completed the M.Sc. (P.T) degree with an average of 60% (Ph. D grade)

(iii) Candidate should be fully registered with Nigeria Medical Rehabilitation Board and must possess a current license of the Board.

Duration: PGD (Full-Time: One calendar year) M.Sc (Full-Time: 18 months) Ph.D in Physiotherapy (Full-Time: 6 Semesters)

(II) FACULTY OF CLINICAL SCIENCES

DEPARTMENT OF MENTAL HEALTH

Programmes offered:

1. Postgraduate Diploma (PGD) in Drug and Alcohol Studies (Blended)
2. M.Sc in Drug and Alcohol Studies

A. Postgraduate Diploma (PGD) in Drug and Alcohol Studies (Blended programme: in-person and online classes)

Admission Requirements

Postgraduate Diploma (PGD) in Drug and Alcohol Studies Candidates with first degrees from a recognized university in the following fields are eligible: Medicine, Nursing, Pharmacy, Pharmacology, Physiology, Sociology, Guidance and Counselling, and other related health and human development.

MSc in Drug and Alcohol Studies

Candidates with first degrees from a recognized university in the following fields are eligible: Medicine, Nursing, Pharmacy, Pharmacology, Physiology, Sociology, Guidance and Counselling, and other related health and human development.

Duration:

- Postgraduate Diploma (PGD) in Drug and Alcohol Studies (Blended): 2 semesters
- M.Sc in Drug and Alcohol Studies: 3 semesters

FOR PAYMENT AND APPLICATION, kindly follow the steps below:

1. Visit www.unimed.edu.ng
2. Click admission
3. Click Postgraduate
4. Click Apply here button
5. Fill the require information, and
6. Select your programme of choice
7. Click continue

Click payment and choose your category (Doctorate/Masters/Postgraduate Diploma). Application form is N20,000.00

Note: Make use of Master or Visa ATM card and not Verve to complete your payment

1. After successful payment, you are redirected to the Application Form
2. You are advised to print your application receipt and use the details provided (REG No. and TRANSACTION ID) to access your application form.
3. Fill the Biodata and Academics record forms, upload necessary documents
4. Click on submit and thereafter print your application slip.

The completed forms and all documents should be submitted latest by 25th, September, 2024.

For Enquiries

Postgraduate programmes (**08034710076**)

Dr. Woleola Ekundayo
Registrar

UPCOMING EVENT

CENTRE FOR HERBAL MEDICINE AND DRUG DISCOVERY
UNIVERSITY OF MEDICAL SCIENCES, ONDO
PRESENTS

AFRICAN TRADITIONAL MEDICINE DAY 2024

THEME:
"Development and Promotion of Indigenous Herbal Medicine to facilitate Universal Health Care in Nigeria".

29th AUGUST, 2024 | 10:00AM
Venue: TETFund hall, Laje campus

KEYNOTE SPEAKER:
Pharm. ZAINAB SHARIFF
Pioneer Director, Traditional, Complementary and Alternative Medicine Department, Federal Ministry of Health and Social welfare.

GUESTS OF HONOUR

Dr. AZEEZ ADEREMI,
Ap. Chief Executive Officer/ Interim Administrator,
Federal College of Complementary and Alternative Medicine.

Prof. KOFI BUSIA
Former Director of Health Services,
West African Health Organisation.

Chief Host
Prof. ADESEGUN FATUSI
Vice Chancellor,
University of Medical Sciences, Ondo

Host
Dr. OGHALE OYUAKPORIE-UVO
Ap. Director, CeHMDD
Zoom <https://bit.ly/MedicineDay>

POST UTME/DIRECT ENTRY ADMISSION SCREENING FOR THE 2024/2025 ACADEMIC SESSION

The University of Medical Sciences (UNIMED), Ondo State is the First (1st) Specialized Medical and Health Sciences institution in West Africa. Since its establishment in 2014, the University has carved a niche by being one of the few public universities with a stable & uninterrupted academic calendar with exceptional educational service delivery quality.

According to NUC Ranking (2021), the University was ranked first (1st) among Ondo State-Owned Universities, 2nd best of all Public & Private Universities in Ondo State, 4th among all State-Owned Universities in Nigeria, and 19th Best University in Nigeria.

Accordingly, the University hereby invites all suitably qualified candidates for undergraduate admission in the 2024/2025 Academic Session into the following Faculties / Disciplines:

- **Faculty of Clinical Sciences**

1. Medicine and Surgery

- **Faculty of Dental Sciences**

1. Dentistry
2. Dental Therapy
3. Dental Technology

- **Faculty of Pharmacy**

1. Pharmacy***

- **Faculty of Medical Rehabilitation**

1. Doctor of Physiotherapy
2. Prosthetics and Orthotics
3. Audiology
4. Occupational Therapy
5. Speech Language Therapy***

- **Faculty of Nursing Science**

1. Nursing Science

- **Faculty of Allied Health Sciences**

1. Medical Laboratory Science
2. Radiography and Radiation Science
3. Human Nutrition and Dietetics
4. Health Information Management
5. Complementary and Alternative Medicine
6. Health Care Administration and Hospital Management

Faculty of Basic Clinical Sciences

1. Pharmacology

Faculty of Basic Medical Sciences

1. Anatomy with options in:

- i. Forensic Science
- ii. Human and Medical Genetics
- iii. Mortuary Science
- iv. Neuroscience

2. Biochemistry

3. Physiology

Faculty of Science

1. Animal & Environmental Biology with an option in

- i. Cell Biology and Genetics

2. Biotechnology

3. Chemistry with options in:

- i. Industrial Chemistry
- ii. Analytical/Environmental Chemistry

4. Computer Science

5. Environmental Management and Toxicology

6. Food Science and Technology

7. Industrial Mathematics

8. Information Technology

9. Mathematics

10. Medical Physics

11. Medicinal Chemistry

12. Microbiology

13. Physics

14. Physics with Electronics

15. Plant Biology and Biotechnology

16. Science Laboratory Technology

17. Statistics

School of Public Health

1. Community Health Science

2. Environmental Health Science

- **Please note that the courses with Asterisks (***) are newly introduced programmes.**

ELIGIBILITY

1. Candidates who chose “Ondo State University of Medical Sciences” as their most preferred (1st) Choice Institution in the 2024 UTME and scored **150 and above** are eligible to apply for the Post UTME Screening.

2. **Also candidates who do not choose the “Ondo State University of Medical Sciences” and are willing to change to the institution as their most preferred (1st) choice are also advised to apply for the Post Utme Screening.**

3. All applicants are required to have a minimum of five (5) credits in either WAEC, NECO and GCE O' Level, which must include English Language, Mathematics and any other three (3) relevant subjects as may be specified by each Faculty. The five (5) O'Level credits should be obtained in not more than **two (2) sittings**.

- For Medicine and Surgery, Dentistry and Doctor of Physiotherapy programmes, the five (5) O'Level credits must include Mathematics, English, Biology, Chemistry & Physics which must be obtained at only one (1) sitting.

4. Direct Entry candidates who have already applied through JAMB and also picked the University as their most preferred (1st) Choice Institution in the 2024 Direct Entry Registration are also eligible to apply for the Post UTME Screening.

- They are required to possess a minimum of ten (10) points aggregate in relevant 'A' level certificates or B.Sc. (Hons) Degree with a minimum of Second Class (Lower Division)/Diploma in the Basic Medical or Basic Science subjects with a minimum of Lower Credit;
- for Medicine and Surgery and Dentistry programmes, a minimum of thirteen (13) points aggregate in relevant 'A' level certificates or Second Class Upper, B.Sc. (Hons) Degree in any Basic Medical Science courses;
- for the Nursing Science programme, candidates with a first (1st) degree in health-related and basic science courses with a minimum of Second Class Lower Honours are also eligible to apply.

5. JAMB UTME Subject Combination: All courses in the various Faculties require English Language, Biology, Chemistry and Physics. Candidates applying for admission in Mathematics, Physics, Statistics, or Computer Science are required to present a UTME subject combination of English Language, Mathematics, Physics, and Chemistry.

HOW TO APPLY FOR THE 2024 POST UTME SCREENING:

Eligible candidates should log on to the University website www.unimed.edu.ng and take the following steps:

- Click on **Admission**;
- Click on **Post-UTME** to access the Post-UTME Portal;
- Click on **PAYMENT** to make payment via the online payment system using VISA or MASTER Card. **Note that:** VERVE Card is not allowed;
- After payment, Print the Payment Receipt
- On the **Post-UTME Portal**, Click on **Application Portal** to Login with your **UTME Registration Number** and **Payment Transaction ID** as Password to complete the Post-UTME registration.

For more details on payment and application, check the University website (www.unimed.edu.ng) *PAYMENT IS ONLY VIA THE UNIMED PAYMENT PLATFORM ON THE UNIVERSITY WEBSITE, ON NO ACCOUNT SHOULD CANDIDATES MAKE PAYMENT TO ANY UNAUTHORISED ACCOUNT. PLEASE SEEK CLARIFICATION IN CASE OF DOUBT.*

DISCLAIMER

Kindly note that the University of Medical Sciences does **NOT** have admission agents. For the avoidance of doubt, visit the University website at www.unimed.edu.ng for valid and authentic information about admission into various programmes offered by UNIMED; and for physical clarification on admission, please visit the Admissions Unit, Academic Affairs Office, UNIMED Laje Road Campus, within Medical Village, Ondo City, Ondo State, Nigeria.

Also, note that valid payments for the purchase of forms can ONLY be done as described above and NOT into any individual's account. Anyone who deals with an unauthorized individual and/or makes payment(s) into any individual's account does so at her/his own risk!

Dr. Woleola J. Ekundayo
Registrar

2024 POST UTME SCREENING DATE AND VENUE OF THE EXAMINATION:

The 2024 Post UTME Screening Exercise will be held between **Tuesday 3rd, Wednesday 4th and Thursday 5th September, 2024.**

Venue of Examination and other modalities for the 2024 Post UTME Screening Exercise will be communicated to validly registered candidates via their individual portal on the University Website before the above stated dates.

ALSO NOTE THAT:


1. All candidates will be required to bring along the following items to the screening venue:
a. JAMB 2024 UTME Notification of Results Slip/Registration Slip for Direct-Entry Candidates;
b. Printed copy of the completed 2024 Post UTME Screening slip.

2. Direct Entry Candidates are to request for their Official Academic Transcripts **which must be forwarded directly** from their previous institution to the Registrar, University of Medical Sciences, Ondo, either by email to transcript@unimed.edu.ng or through courier service to the following address: **Office of the Registrar, University of Medical Sciences, Laje road Campus, within Medical Village, Ondo City, Ondo State, Nigeria.**

(Direct Entry applicants will not be considered for admission without evidence of submission of submission of official academic transcripts to the above address)

3. For more information or clarifications, candidates are advised to visit the University website at www.unimed.edu.ng, send an e-mail to admissions@unimed.edu.ng, or call the following phone numbers: **+234 705 121 2222** or **+234 813 551 3654**.

4. Any candidate who fails to present himself/herself for the 2024 Post UTME Screening Exercise will **NOT** be considered for admission.



The advertisement features the large vertical text 'UNIMED' on the left. On the right, it includes the University of Medical Sciences logo and name, along with the tagline 'Nigeria's 1st Medical & Health Sciences University' and the website www.unimed.edu.ng. A central graphic shows a question mark icon with the text 'Did you know that there are over 30 COURSES offered at UNIMED'. Below this, it lists course costs: 18 courses for less than ₦200,000 (The NextGen Scholarship), 13 courses for less than ₦450,000, and 3 courses for less than ₦300,000. A section titled 'What you stand to gain' lists: uninterrupted academic calendar, top-rated lecturers & facilitators, and ultra-modern learning facilities & technologies. At the bottom, it provides contact information: e-mail: admissions@unimed.edu.ng and Call: 08135813654, and the website www.unimed.edu.ng.